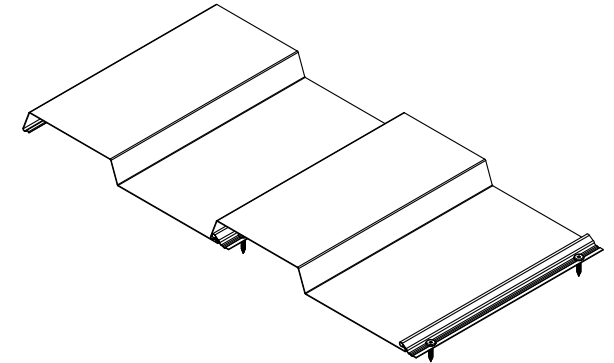
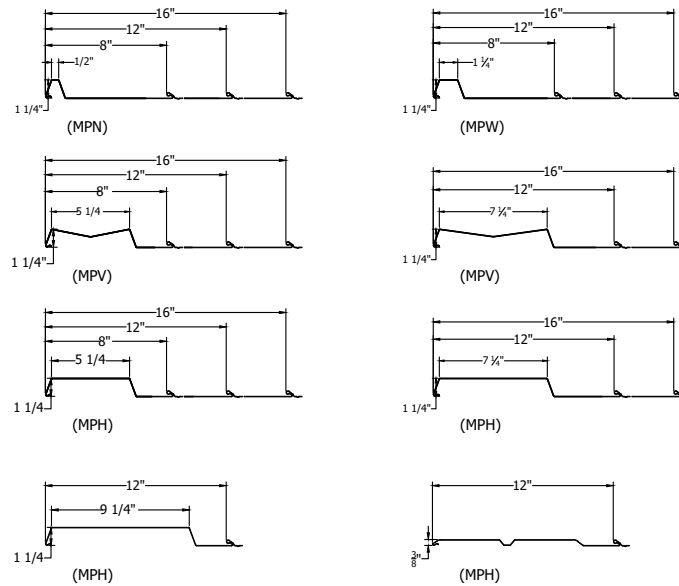


SPECIFICATIONS		
APPLICATION	WALL	
PANEL COVERING	8" (203mm)	
	12" (305mm)	
	16" (406mm)	
PANEL DEPTH	MPN	
	MPH	1 1/4" (32mm)
	MPV	
	MPW	
	MPS	3/8" (10mm)
MINIMUM PANEL LENGTH	2' (610mm)	
MAXIMUM PANEL LENGTH	22' (6.8m)	

AVAILABLE	
MATERIAL	
ALUMINIUM	0.032" , 0.040" (0.8mm , 1.0mm)
PAINTED STEEL	24 GA.

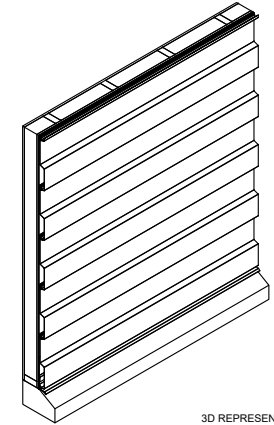
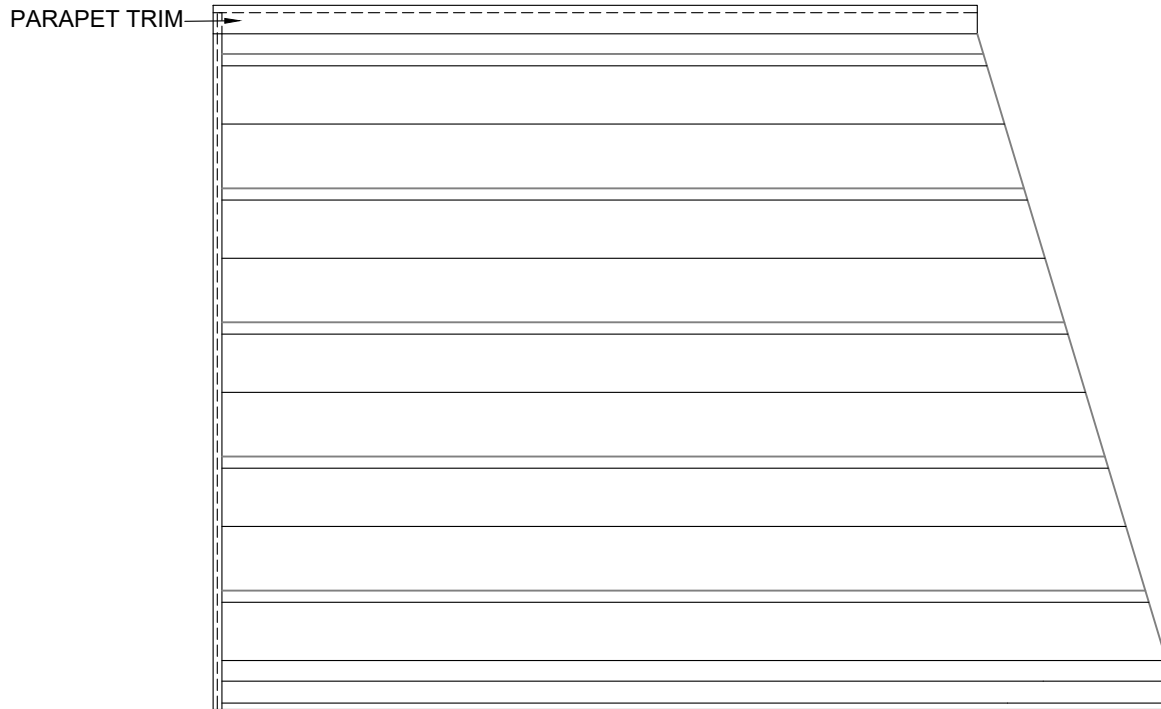
EXPANSION FACTORS FOR SPACING	
PANEL LENGTH 22' (6.8m)	
STEEL	5/8" (8mm)
ALUMINIUM	11/16" (17mm)

INSTALLATION DETAILS	
PAGE 2-3	↳ HORIZONTAL APPLICATION • SOLID SUBSTRATE
PAGE 4-5	↳ HORIZONTAL APPLICATION • OPEN FRAMING
PAGE 6-7	↳ VERTICAL APPLICATION • SOLID SUBSTRATE
PAGE 8-9	↳ VERTICAL APPLICATION • OPEN FRAMING
PAGE 10	PANEL INSTALLATION - SPECIFIC DETAILS
PAGE 11	TRIMS AND ACCESSORIES

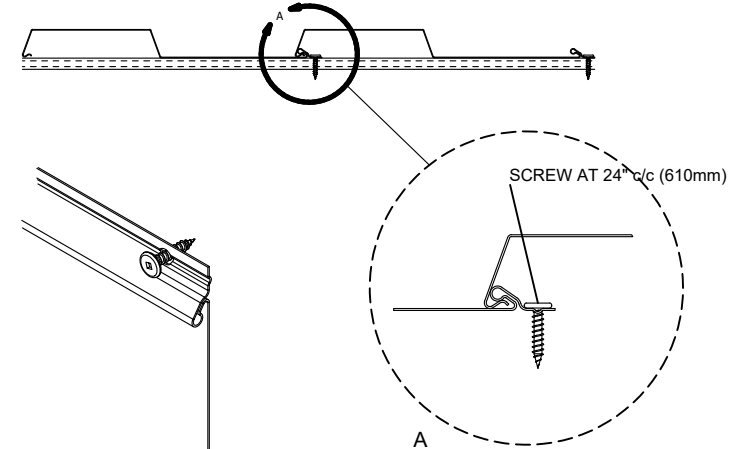


HORIZONTAL INSTALLATION
SOLID SUBSTRATE

ELEVATION



3D REPRESENTATION



NOTES :

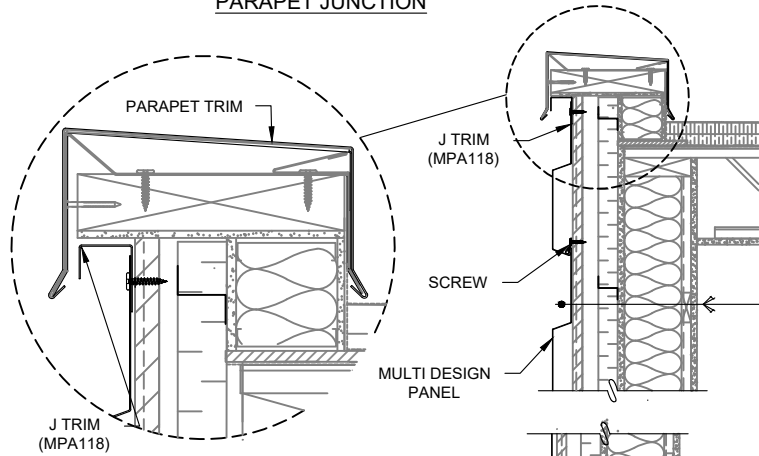
THE EXPANSION OF ALUMINUM AND STEEL DEPENDS ON A COMBINATION OF SEVERAL FACTORS: THE LENGTH AND WIDTH OF THE PANEL, THE THICKNESS OF THE MATERIAL, ITS COLOR, THE LEVEL OF SUN EXPOSURE, THE TEMPERATURE DURING INSTALLATION. PROVIDE SUFFICIENT EXPANSION SPACE ACCORDING TO THESE FACTORS (SEE EXPANSION FACTOR TABLE).

THE PANEL IS INSTALLED FROM THE BOTTOM UP.

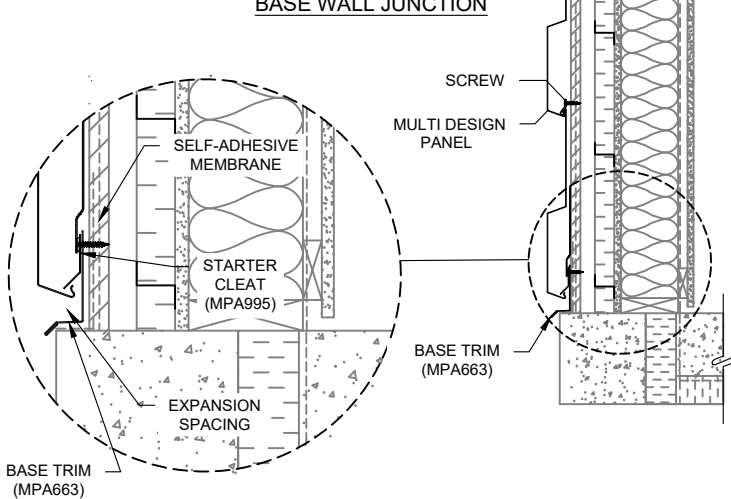
HORIZONTAL INSTALLATION SOLID SUBSTRATE

WALL STRUCTURE

PARAPET JUNCTION



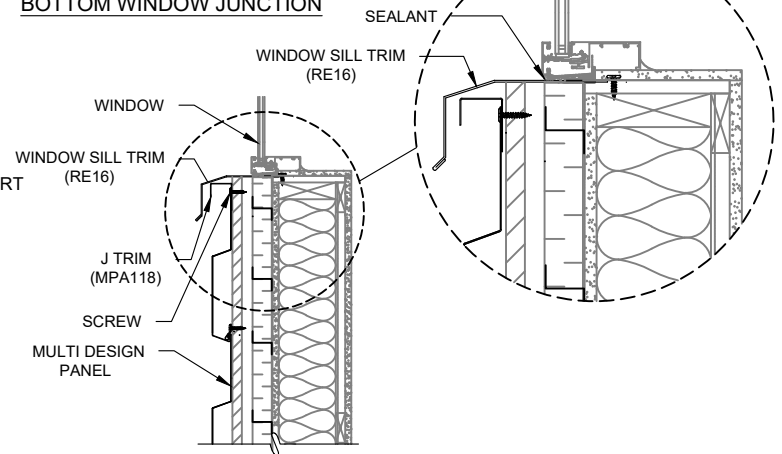
BASE WALL JUNCTION



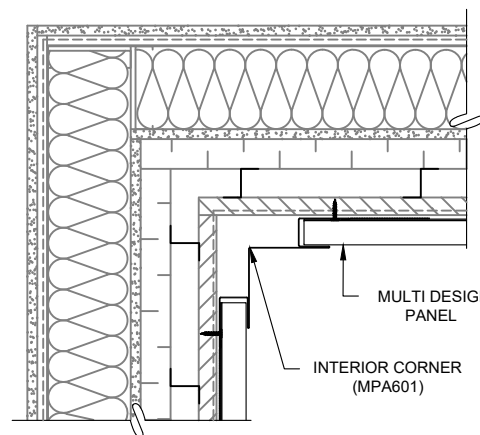
EXTERIOR WALL

- MULTI-DESIGN METAL PANEL
- SELF-ADHESIVE MEMBRANE
- 5/8" PLYWOOD SHEATHING
- VERTICAL METAL OR WOOD SUBGIRT
- INSULATION PANEL
- AIR BARRIER MEMBRANE
- EXTERIOR GYPSE
- WOOD STUD
- VAPOR BARRIER MEMBRANE
- HORIZONTAL WOOD BATTEN
- GYPSE PANEL

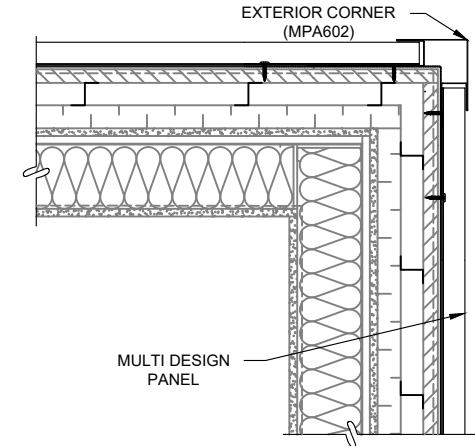
BOTTOM WINDOW JUNCTION



MULTI DESIGN INTERIOR CORNER DETAIL



MULTI DESIGN EXTERIOR CORNER DETAIL

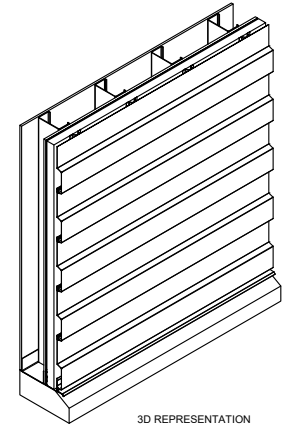
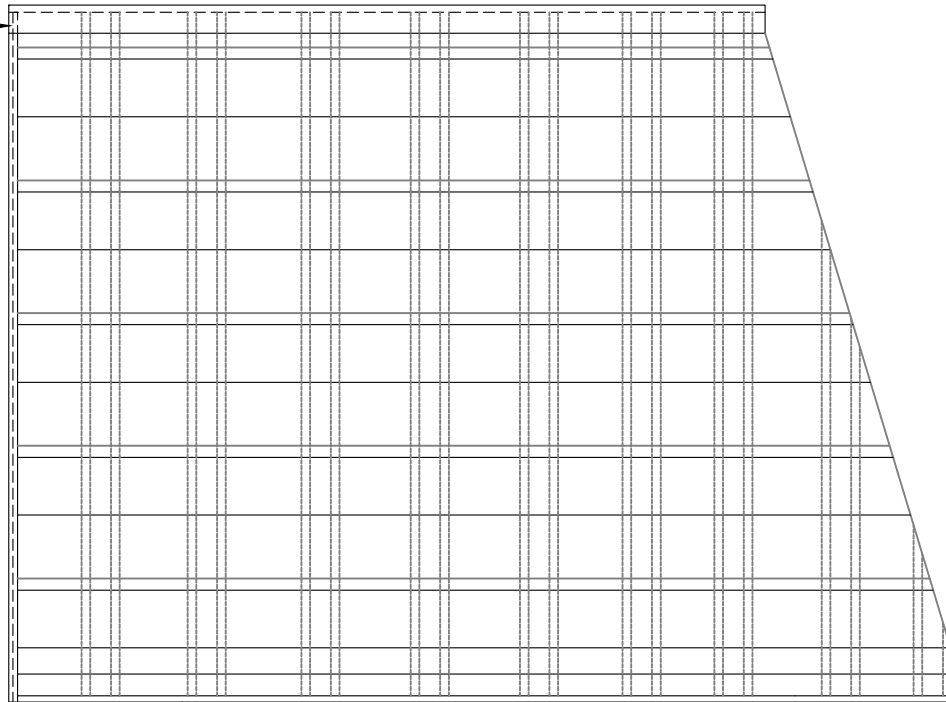


NOTES :
 PROVIDE A THERMAL EXPANSION SPACE AT THE BOTTOM OF THE PANEL
 (SEE EXPANSION FACTOR TABLE)
 WALL CUT FOR INFORMATION ONLY

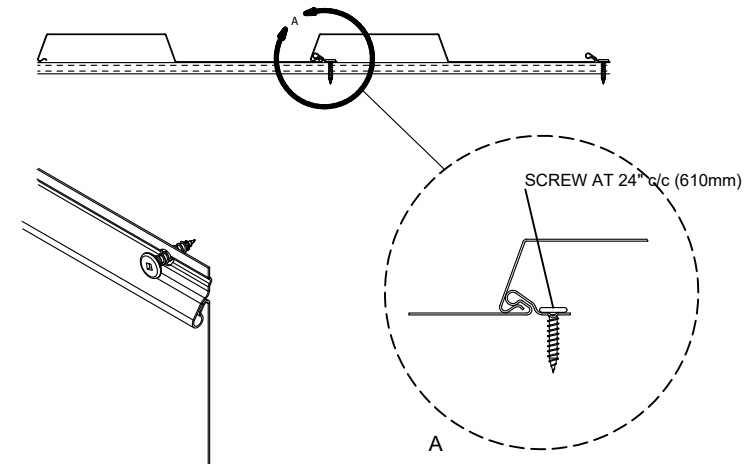
HORIZONTAL INSTALLATION
OPEN FRAMING

ELEVATION

PARAPET TRIM



3D REPRESENTATION

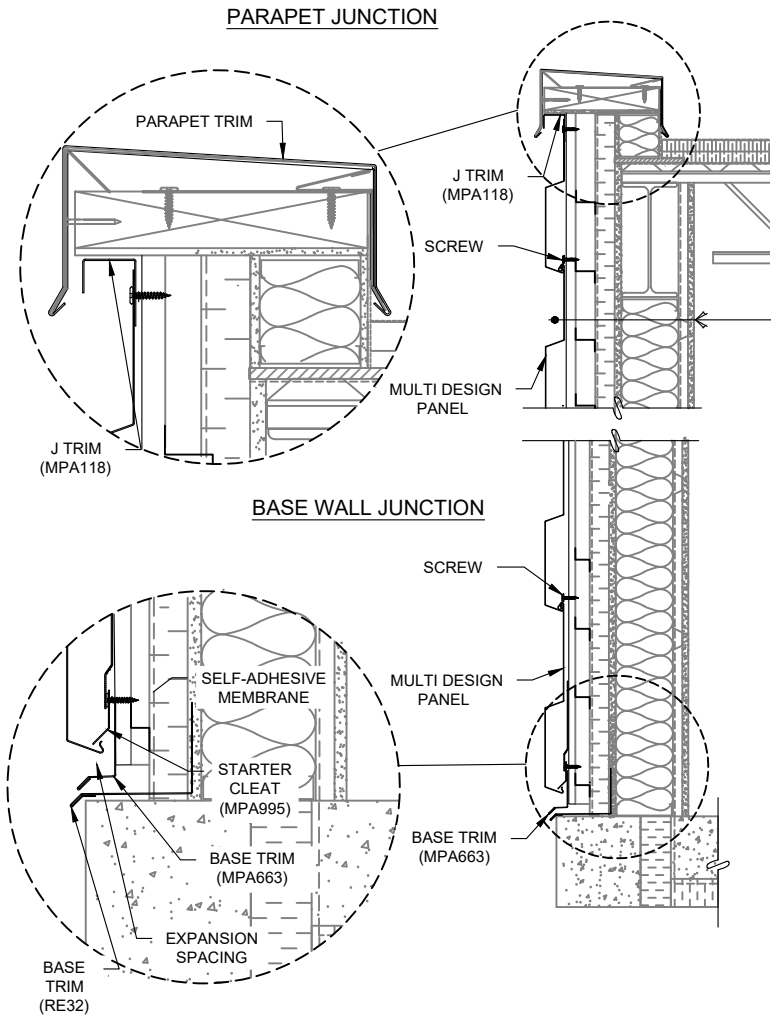


NOTES :

- THE EXPANSION OF ALUMINUM AND STEEL DEPENDS ON A COMBINATION OF SEVERAL FACTORS: THE LENGTH AND WIDTH OF THE PANEL, THE THICKNESS OF THE MATERIAL, ITS COLOR, THE LEVEL OF SUN EXPOSURE, THE TEMPERATURE DURING INSTALLATION. PROVIDE SUFFICIENT EXPANSION SPACE ACCORDING TO THESE FACTORS (SEE EXPANSION FACTOR TABLE).
- THE PANEL IS INSTALLED FROM THE BOTTOM UP.
- METAL SUBGIRT INSTALLATION AT 24" c/c. (610mm) (IF THE SPACING IS DIFFERENT, REFER TO THE TABLE OF CHARGES)

HORIZONTAL APPLICATION
OPEN FRAMING

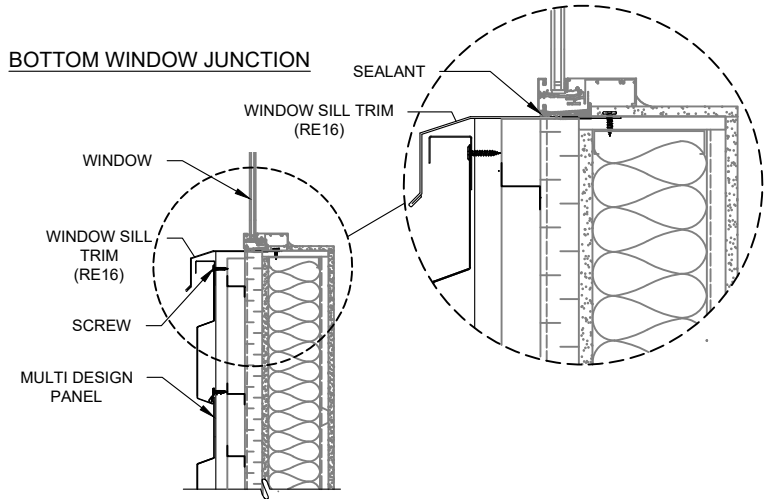
WALL STRUCTURE



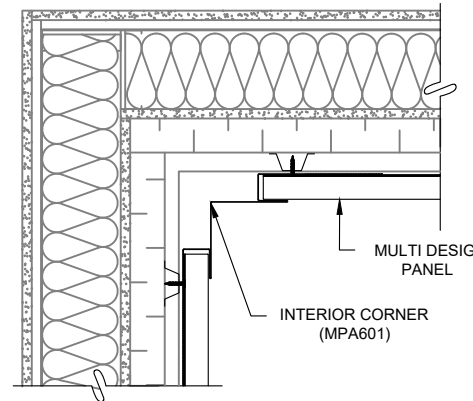
EXTERIOR WALL

- MULTI DESIGN METAL PANEL
- VERTICAL METAL SUBGIRT
- HORIZONTAL METAL SUBGIRT
- INSULATION PANEL
- AIR BARRIER MEMBRANE
- EXTERIOR GYPSE
- METAL STUD
- MINERAL FIBER INSULATION
- VAPOR BARRIER MEMBRANE
- HORIZONTAL METAL SUBGIRT
- GYPSE PANEL

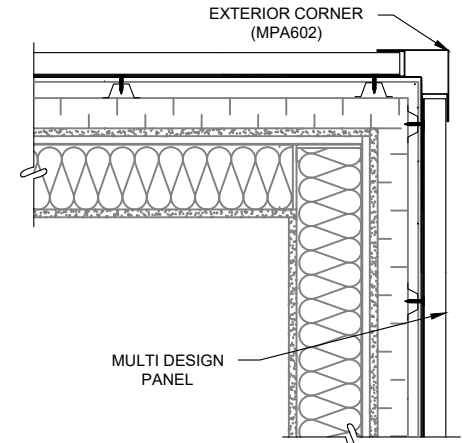
BOTTOM WINDOW JUNCTION



MULTI DESIGN INTERIOR CORNER DETAIL



MULTI DESIGN EXTERIOR CORNER DETAIL



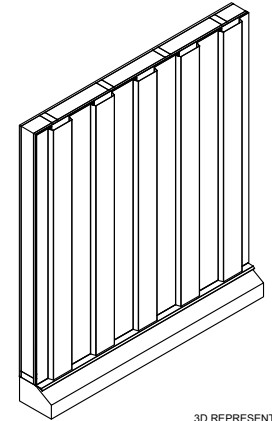
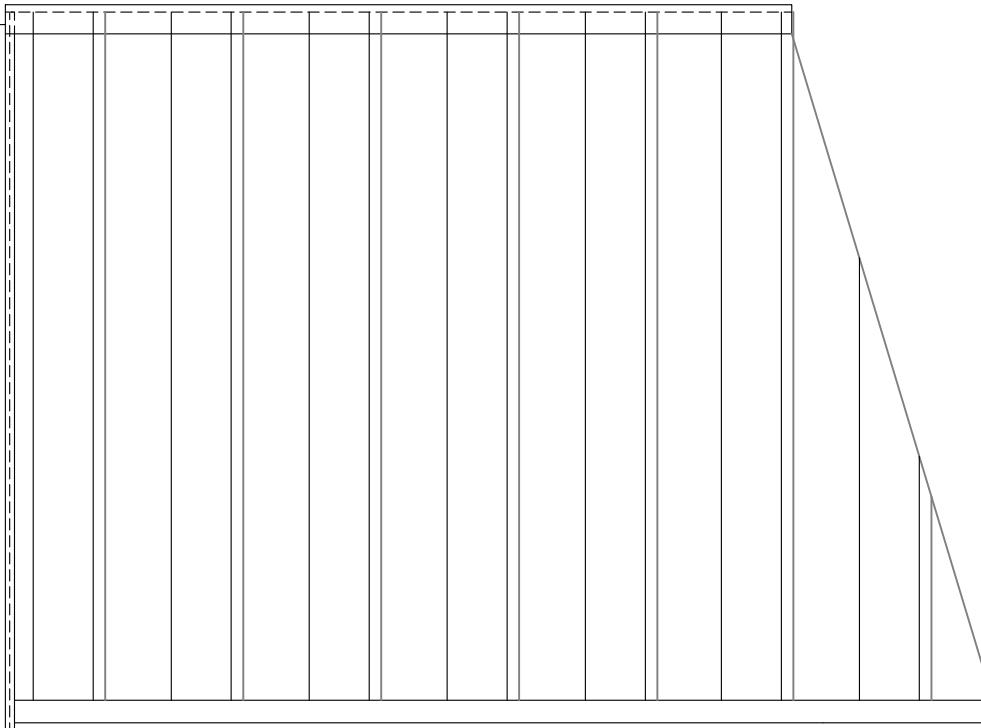
NOTES :

PROVIDE A THERMAL EXPANSION SPACE AT THE BOTTOM OF THE PANEL
(SEE EXPANSION FACTOR TABLE)
WALL CUT FOR INFORMATION ONLY

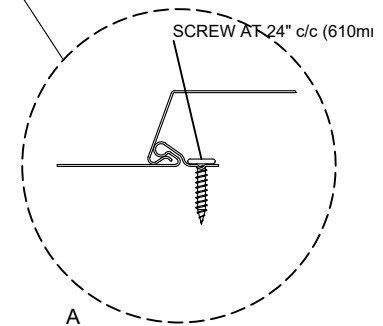
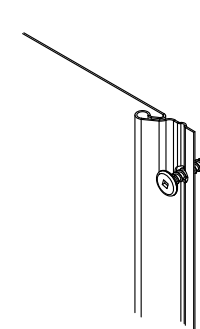
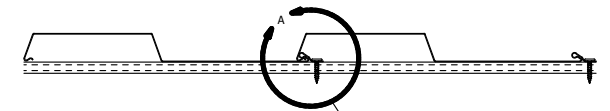
VERTICAL INSTALLATION
SOLID SUBSTRATE

ELEVATION

PARAPET TRIM



3D REPRESENTATION



NOTES :

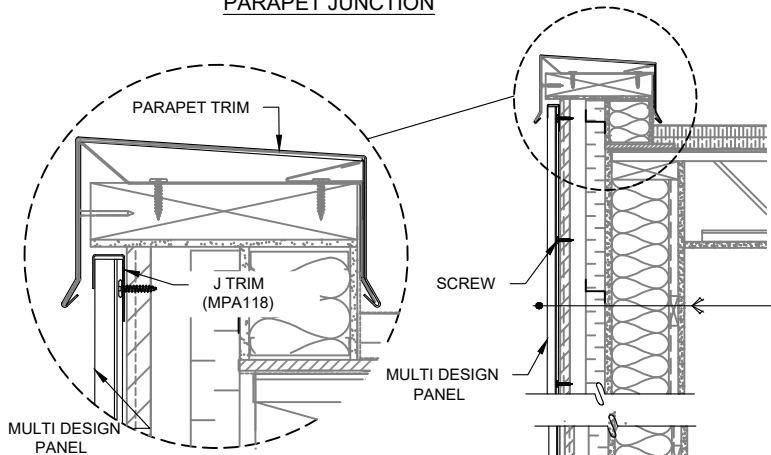
THE EXPANSION OF ALUMINUM AND STEEL DEPENDS ON A COMBINATION OF SEVERAL FACTORS: THE LENGTH AND WIDTH OF THE PANEL, THE THICKNESS OF THE MATERIAL, ITS COLOR, THE LEVEL OF SUN EXPOSURE, THE TEMPERATURE DURING INSTALLATION. PROVIDE SUFFICIENT EXPANSION SPACE ACCORDING TO THESE FACTORS (SEE EXPANSION FACTOR TABLE).

THE PANEL IS INSTALLED FROM LEFT TO RIGHT.

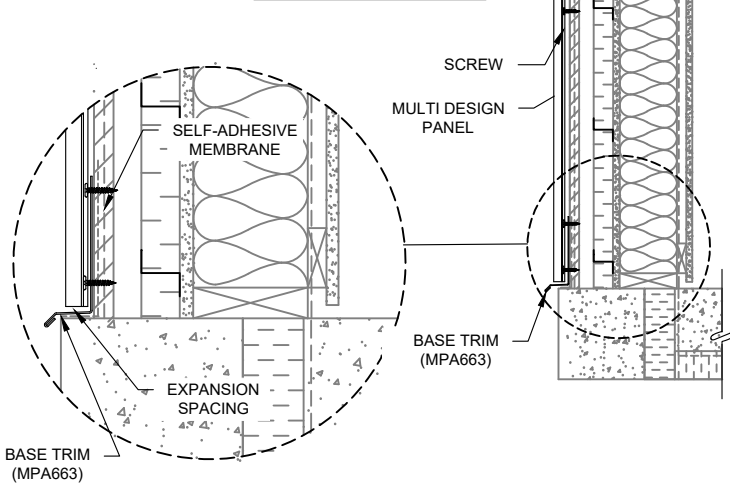
VERTICAL INSTALLATION
SOLID SUBSTRATE

WALL STRUCTURE

PARAPET JUNCTION



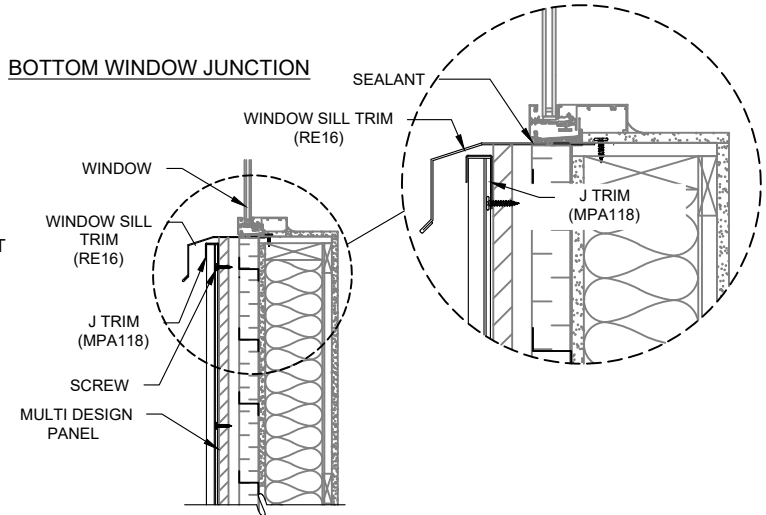
BASE WALL JUNCTION



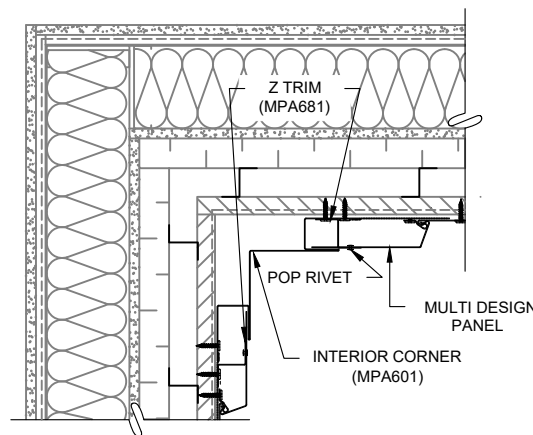
EXTERIOR WALL

- MULTI DESIGN METAL PANEL
- SELF ADHESIVE MEMBRANE
- 5/8" PLYWOOD SHEATING
- VERTICAL METAL OR WOOD SUBGIRT
- INSULATION PANEL
- AIR BARRIER MEMBRANE
- EXTERIOR GYPSE
- WOOD STUD
- VAPOR BARRIER
- HORIZONTAL WOOD BATTEN
- GYPSE PANEL

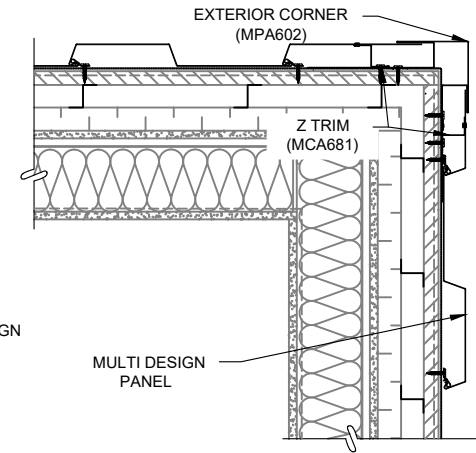
BOTTOM WINDOW JUNCTION



MULTI DESIGN INTERIOR CORNER DETAIL



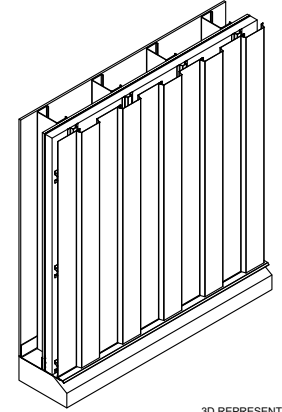
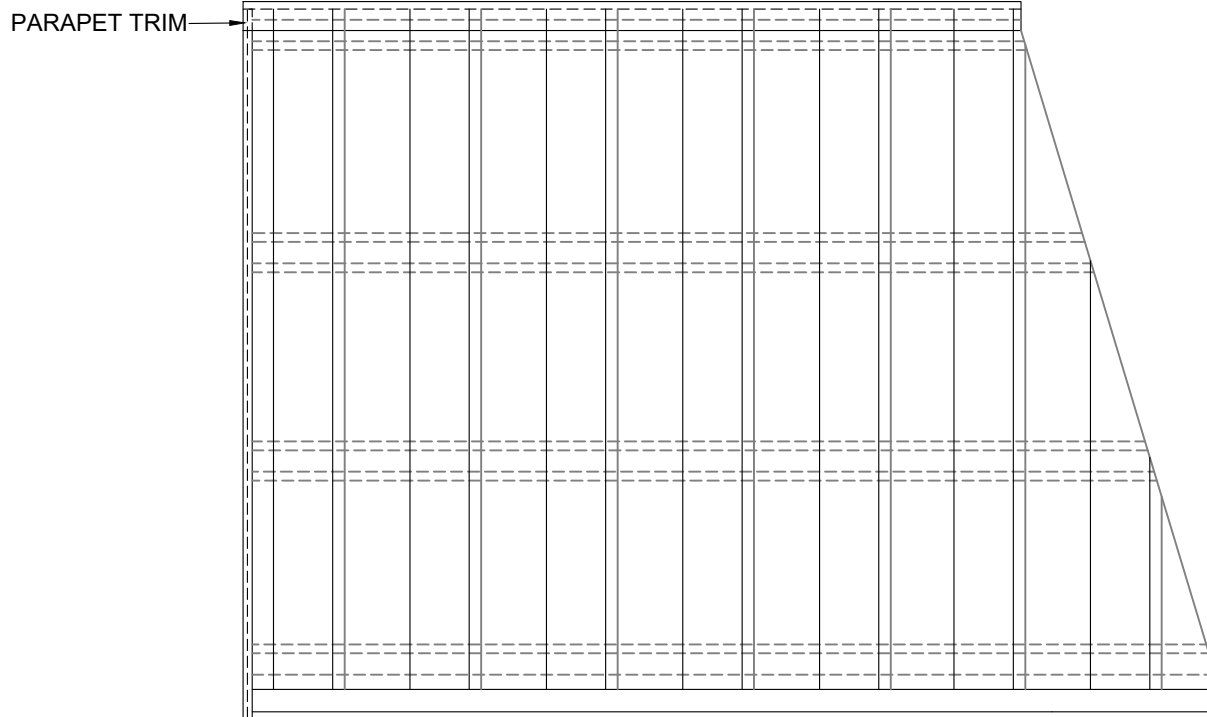
MULTI DESIGN EXTERIOR CORNER DETAIL



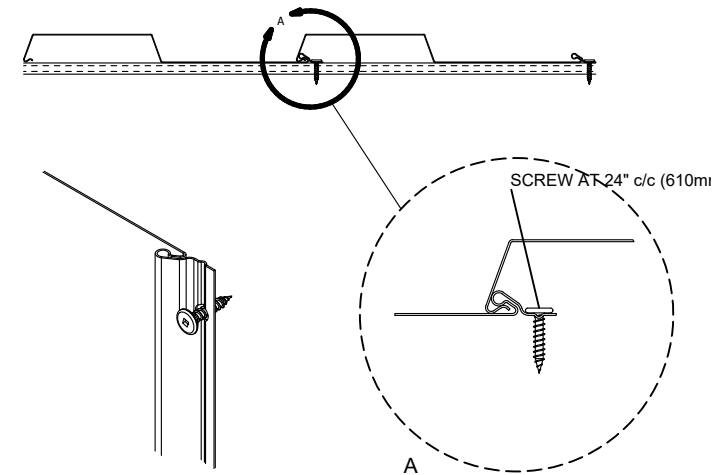
NOTES :
PROVIDE A THERMAL EXPANSION SPACE AT THE BOTTOM OF THE PANEL
(SEE EXPANSION FACTOR TABLE)
WALL CUT FOR INFORMATION ONLY

VERTICAL INSTALLATION
OPEN FRAMING

ELEVATION



3D REPRESENTATION



NOTES :

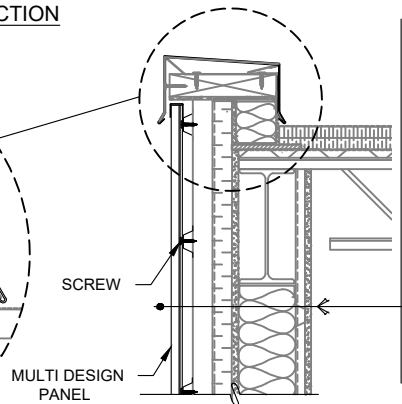
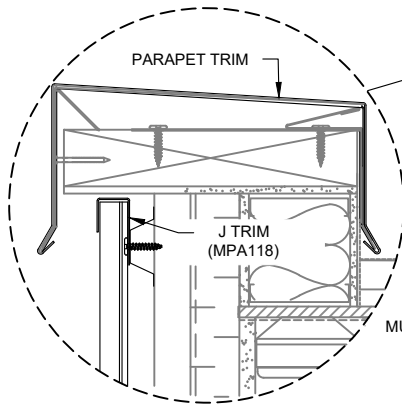
- THE EXPANSION OF ALUMINUM AND STEEL DEPENDS ON A COMBINATION OF SEVERAL FACTORS: THE LENGTH AND WIDTH OF THE PANEL, THE THICKNESS OF THE MATERIAL, ITS COLOR, THE LEVEL OF SUN EXPOSURE, THE TEMPERATURE DURING INSTALLATION. PROVIDE SUFFICIENT EXPANSION SPACE ACCORDING TO THESE FACTORS (SEE EXPANSION FACTOR TABLE).
- THE PANEL IS INSTALLED FROM LEFT TO RIGHT
- METAL SUBGIRT INSTALLATION AT 24" C/C. (610MM) (IF THE SPACING IS DIFFERENT, REFER TO THE TABLE OF CHARGES)

VERTICAL INSTALLATION

OPEN FRAMING

WALL STRUCTURE

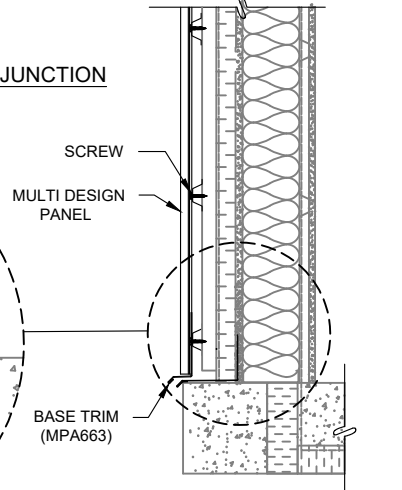
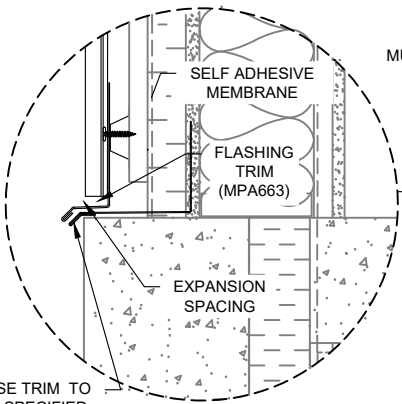
PARAPET JUNCTION



EXTERIOR WALL

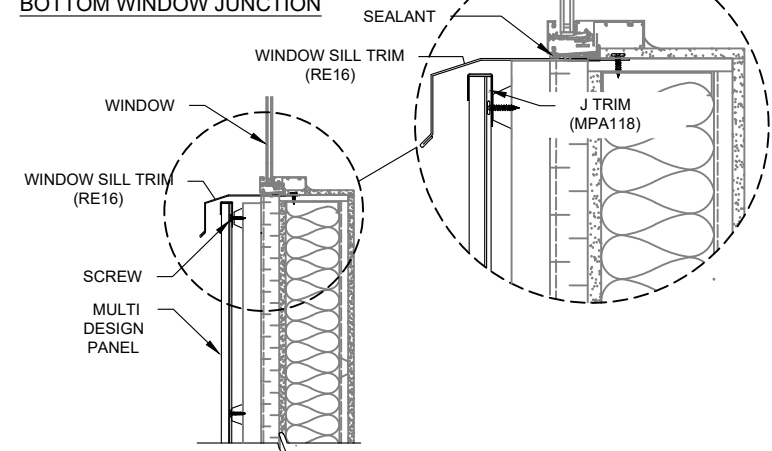
- MULTI DESIGN METAL PANEL
- HORIZONTAL METAL SUBGIRT
- VERTICAL METAL SUBGIRT
- INSULATION PANEL
- AIR BARRIER MEMBRANE
- EXTERIOR GYPSE
- METAL STUD
- MINERAL FIBER INSULATION
- VAPOR BARRIER MEMBRANE
- HORIZONTAL METAL SUBGIRT
- GYPSE PANEL

BASE WALL JUNCTION

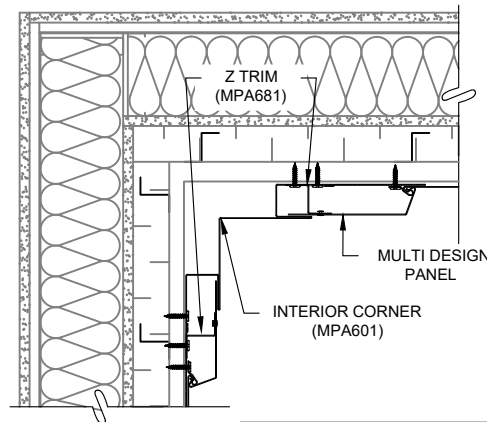


BASE TRIM TO BE SPECIFIED (RE32)

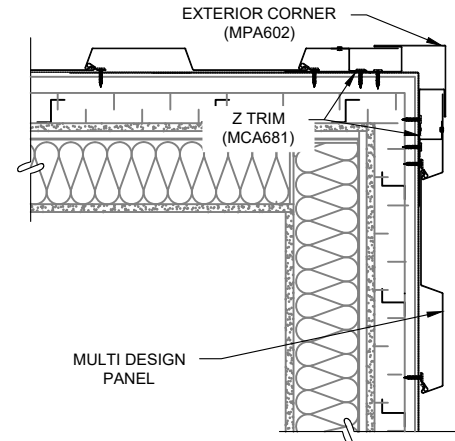
BOTTOM WINDOW JUNCTION



MULTI DESIGN INTERIOR CORNER DETAIL



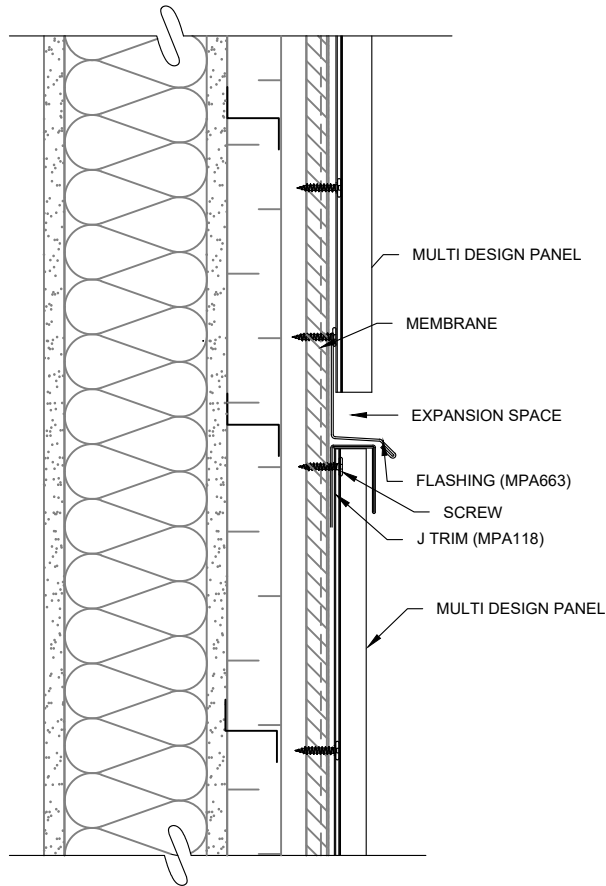
MULTI DESIGN EXTERIOR CORNER DETAIL



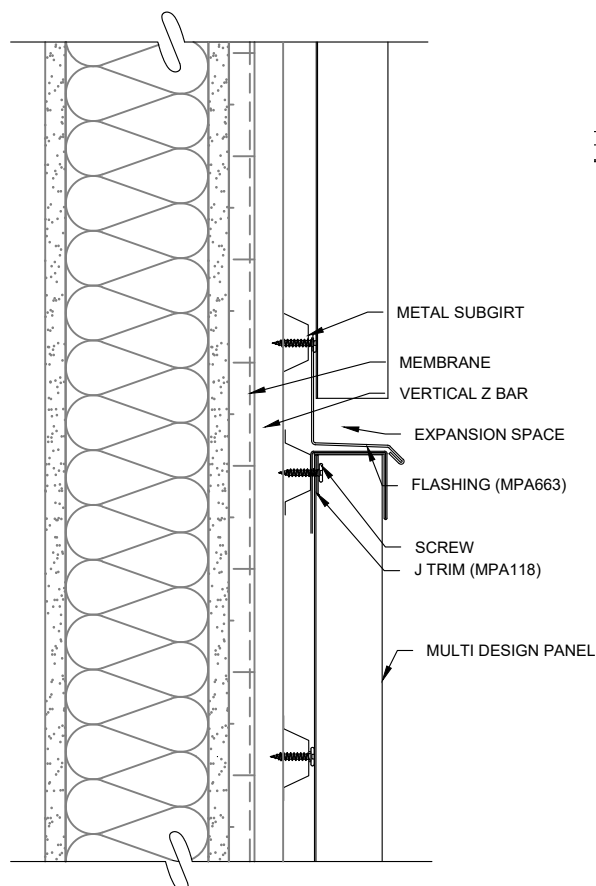
NOTES :
 PROVIDE A THERMAL EXPANSION SPACE AT THE BOTTOM OF THE PANEL (SEE EXPANSION FACTOR TABLE)
 WALL CUT FOR INFORMATION ONLY

PANEL INSTALLATION - SPECIFIC DETAILS

HORIZONTAL TRANSITION INSTALLATION
SOLID SUBSTRATE - PANEL INSTALLED
VERTICALLY

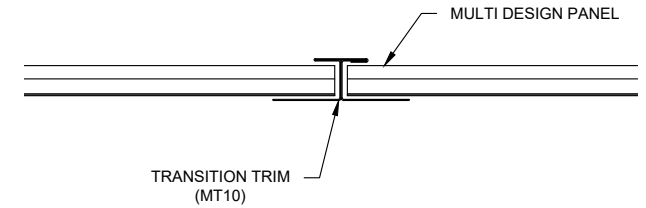


HORIZONTAL TRANSITION INSTALLATION
OPEN FRAMING - PANEL INSTALLED
VERTICALLY

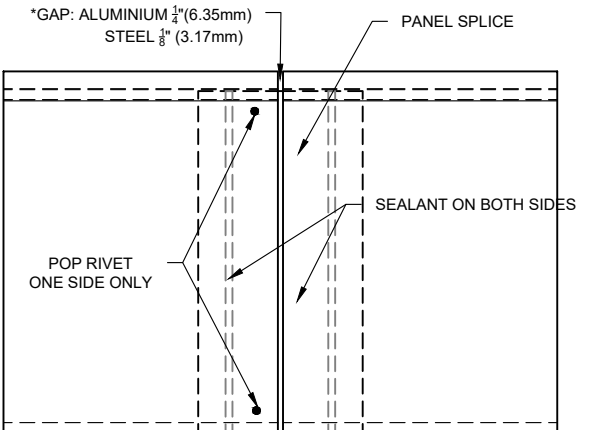


VERTICAL TRANSITION INSTALLATION -
PANEL INSTALLED HORIZONTALLY

OPTION 1 : TRANSITION TRIM
PLAN VIEW

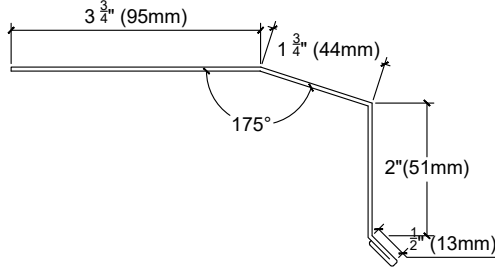
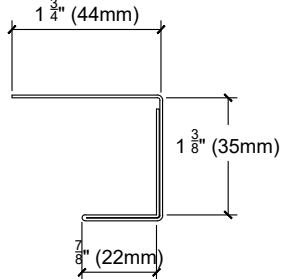
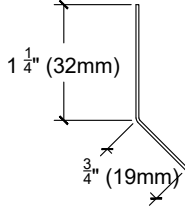
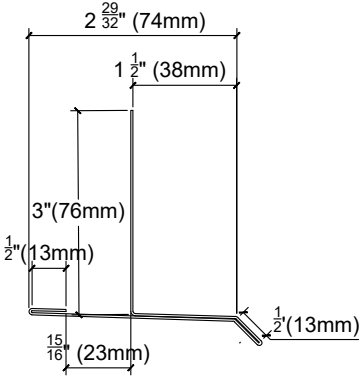
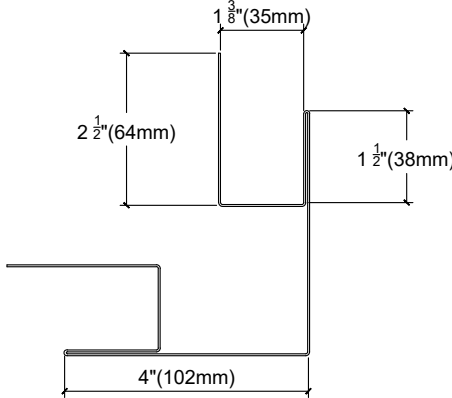
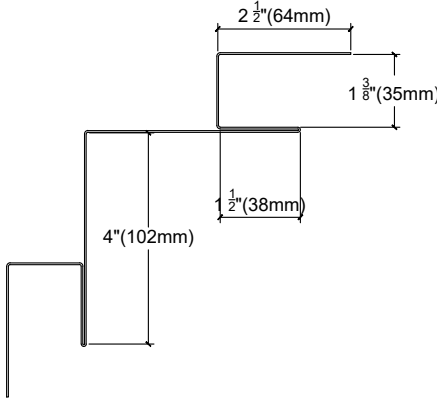


OPTION 2 : SPLICING PLATE



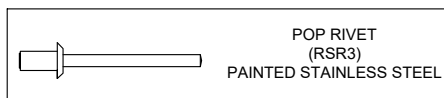
PANEL SPLICE NOTE :

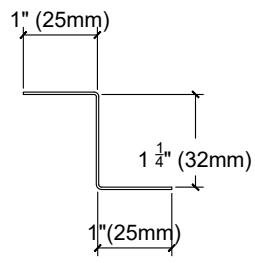
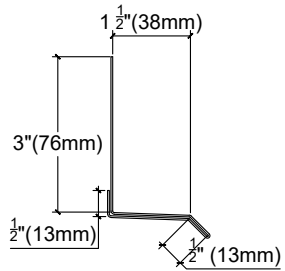
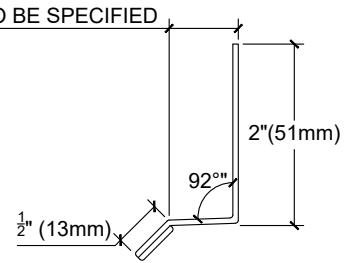
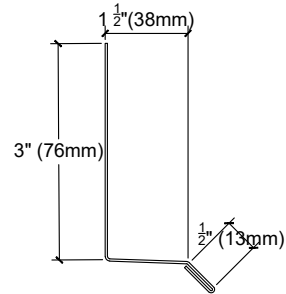
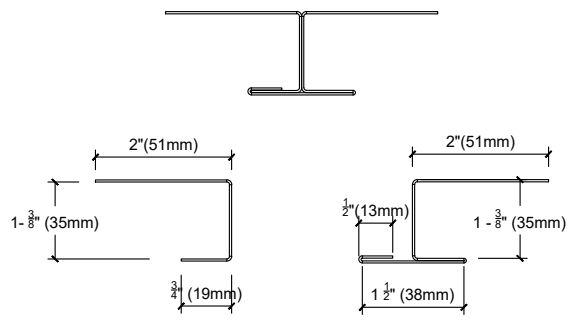
THE JUNCTION SPLICE IS APPLICABLE ONLY ON HORIZONTAL INSTALLATION AT A MAXIMUM PANEL LENGTH OF 21 FEET.

<p>WINDOW SILL TRIM (RE16) RAW MATERIAL : 8,5" (216mm)</p> 	<p>J TRIM (MPA118) RAW MATERIAL : 6,25" (159mm)</p> 	<p>STARTER CLEAT (MPA995) RAW MATERIAL : 2,0" (51mm)</p> 
<p>T WINDOW TRIM (MPA662) RAW MATERIAL : 6,4" (163mm)</p> 	<p>EXTERIOR CORNER (MPA602) RAW MATERIAL : 15,75" (400mm)</p> 	<p>INTERIOR CORNER (MPA601) RAW MATERIAL : 15,75" (400mm)</p> 

NOTE FOR TRIMS :

- THE EXPANSION OF ALUMINUM AND STEEL DEPENDS ON A COMBINATION OF SEVERAL FACTORS: THE LENGTH AND WIDTH OF THE PANEL, THE THICKNESS OF THE MATERIAL, ITS COLOR, THE LEVEL OF SUN EXPOSURE, THE TEMPERATURE DURING INSTALLATION. PROVIDE SUFFICIENT EXPANSION SPACE ACCORDING TO THESE FACTORS (SEE EXPANSION FACTOR TABLE).



Z TRIM (MPA681) RAW MATERIAL : 3.25" (83mm)	BASE TRIM (MPA661) RAW MATERIAL : 7.50" (191mm)	BASE TRIM (RE32)
		 <p>TO BE SPECIFIED</p>
BASE TRIM (MPA663) RAW MATERIAL : 5.5" (140mm)		TRANSITION TRIM (MT10) RAW MATERIAL : 9.50" (241mm)
		

NOTE FOR TRIMS :

- THE EXPANSION OF ALUMINUM AND STEEL DEPENDS ON A COMBINATION OF SEVERAL FACTORS: THE LENGTH AND WIDTH OF THE PANEL, THE THICKNESS OF THE MATERIAL, ITS COLOR, THE LEVEL OF SUN EXPOSURE, THE TEMPERATURE DURING INSTALLATION. PROVIDE SUFFICIENT EXPANSION SPACE ACCORDING TO THESE FACTORS (SEE EXPANSION FACTOR TABLE).

